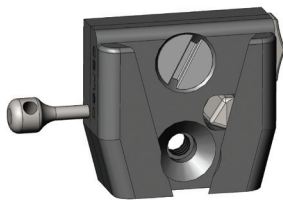


Introducing a line of production accessories and problem solvers engineered by AbelCine



V-Lock Kit

Quick and Secure Mounting of Your Camera Accessories

The Cameo V-Lock Kit provides quick and secure mounting of your camera accessories, designed to be compatible with many common third-party V-Lock systems. Comprised of male and female components, our V-Lock Kit is constructed of precision-machined aluminum and stainless steel, and features a backup safety latch. Both units allow for attachment to accessories from either the front or the back, without the need for disassembly.

- Multiple mounting positions
- Safety latch prevents accidental release
- Release lever can be positioned on either side allowing release by push or pull motion
- Compatible with third-party V-Lock components
- Captive 1/4-20 screws included
- Arri Ring for V-Lock available



VESA Mount

Advanced Monitor Support

The Cameo VESA Mount fits onto a 5/8" stud or junior stand and is the most advanced mount on the market in terms of monitor positioning and safety. The unit offers 360° of rotation, allowing for easy monitor leveling or on-the-fly vertical to horizontal repositioning, as well as 230° of tilt adjustment. Internal friction pads prevent monitor slippage when adjusting either axis.

- Rated to support a monitor up to 50 lbs
- Internal friction system for maximum tilt and rotation control
- Compatible with 75mm and 100mm VESA spacing standards
- Add-ons for additional mounting and carrying options including handle, battery mounts and wireless video receiver mounts



LANC Cables

Provides Trigger and Tally Connections for LANC Compatible Cameras

The Cameo LANC Cables convert closed circuit trigger signals from a handgrip or video lens to a LANC record/stop signal and a second user-assignable function (on compatible cameras). It also outputs the camera's record status, which can feed a tally light, switcher or any device with a tally input. The LANC circuitry is protected in a housing that is thinner than a AA battery and is powered directly from the LANC port, so no external power source is needed. A variety of connections are provided depending on the available power source of the camera. There are two Y cables for powering ENG and cineservo lenses. They allow for triggering from the lens and enable custom programming of the RET button.

Compatible LANC cameras include:

- Sony cameras including FS7, FS700, FS100
- Canon video cameras including C100, C300, C500
- Blackmagic Pocket Cinema, Cinema, Production 4K, and URSA cameras
- Some JVC GY-HM models



Lens Donuts

Cameo lens donuts easily slide over the lens, blocking light out between the lens and mattebox.

Constructed of 1/4" thick neoprene and measuring 8.5" (215.9mm) wide, the lens donuts are designed to prevent light leaks between the lens and mattebox. The openings of the lens donuts are 4" (101.6mm) and 2.5" (63.5mm) for the large and small versions, respectively.